



# Alexander Hudson Estates

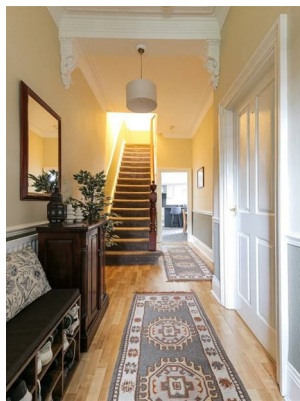
---

Sales Particulars



# Alexander Hudson Estates

Whitfield Road, Forest Hall, NE12





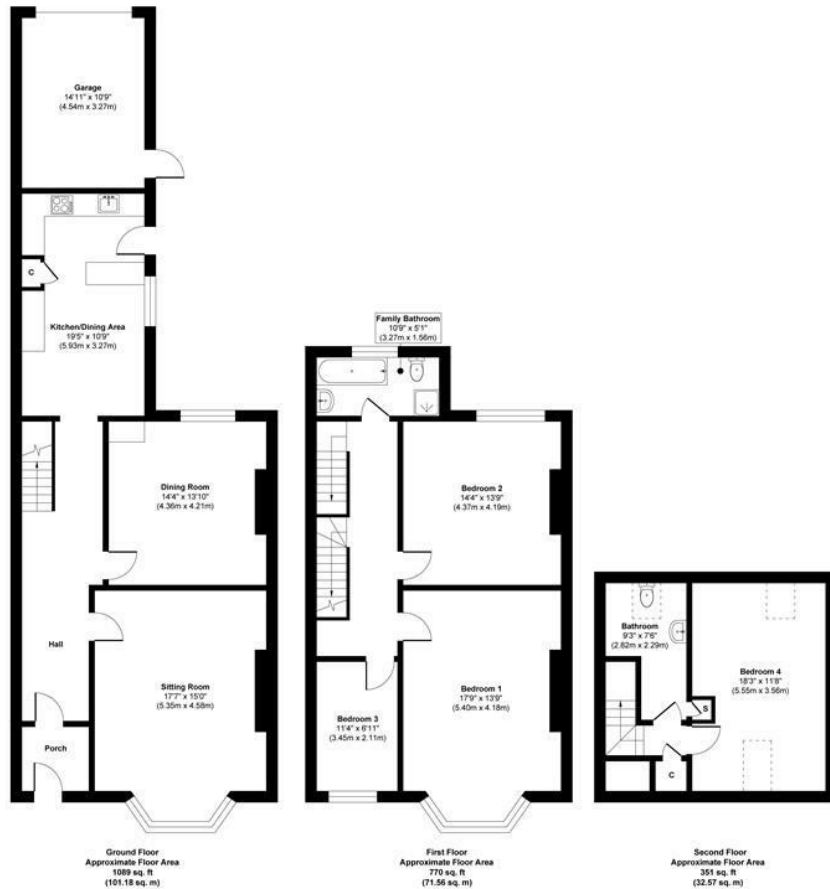
# The Property

Alexander Hudson Estates are delighted to welcome to the market this fabulous period mid terraced home, enjoying a superb position on this quiet residential road with walkway frontage just a stones throw from local shops and amenities in Forest Hall. This beautiful family home enjoys all the period features one would expect from a property of this age and style, whilst meeting the needs of modern living.

The property offers generous accommodation set over three levels which briefly comprises; Entrance vestibule, leading to a welcoming entrance hall with stairs to the first floor. Superb traditional lounge with bay window overlooking the front garden and feature fireplace forming the focal point of the room. Dining room which has period style fireplace. Modern kitchen breakfast room including integrated appliances and ample space for table and chairs. From the first floor landing is a family bathroom/wc, two spacious double bedrooms and a single bedroom. Staircase then leads to a second floor with generous attic style double bedroom and a shower room/wc. Externally, to the front of the property is a lovely mature private lawned garden and to the rear is an enclosed courtyard with access gate to the rear lane and a large single garage, which has pedestrian access door from the rear courtyard and vehicle access from the lane. Solar panels were installed by the vendor in 2023.

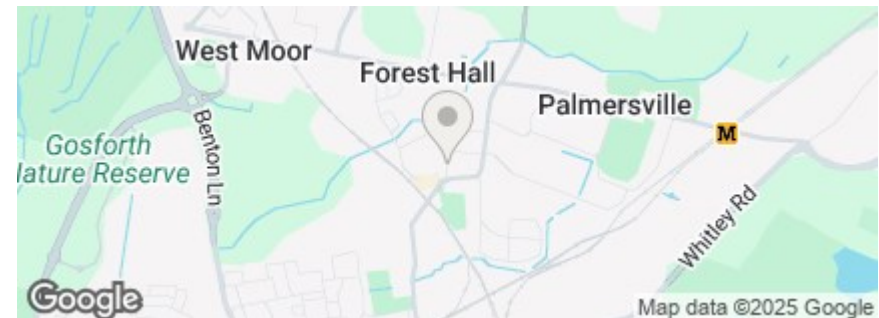
Forest Hall is a well-established suburb named after the Victorian mansion that once stood in the area. This leafy neighbourhood offers a mix of properties, local shops, cafés such as Sands of Tyne Coffee Shop & Bar, and supermarkets, complemented by nearby green spaces. Benton Metro Station and road links via the A19 and A1 provide straightforward commuting. Schools include Forest Hall Primary and Ivy Road Primary, alongside nearby secondary schools. With its combination of character, amenities, and green surroundings, Forest Hall remains a highly desirable area for residents of all ages.

Freehold  
Council Tax: C  
EPC Rating: 80



**Approx. Gross Internal Floor Area 2209 sq. ft / 205.31 sq. m**

Illustration for identification purpose only, measurements approximate and not to scale, unauthorized reproduction is prohibited. All rights reserved for Alexander Hudson Estates





---

Alexander Hudson Estates  
The Printworks  
20 Arrow Close  
NE12 6QN

0191 268 7433  
[sales@alexanderhudson.co.uk](mailto:sales@alexanderhudson.co.uk)